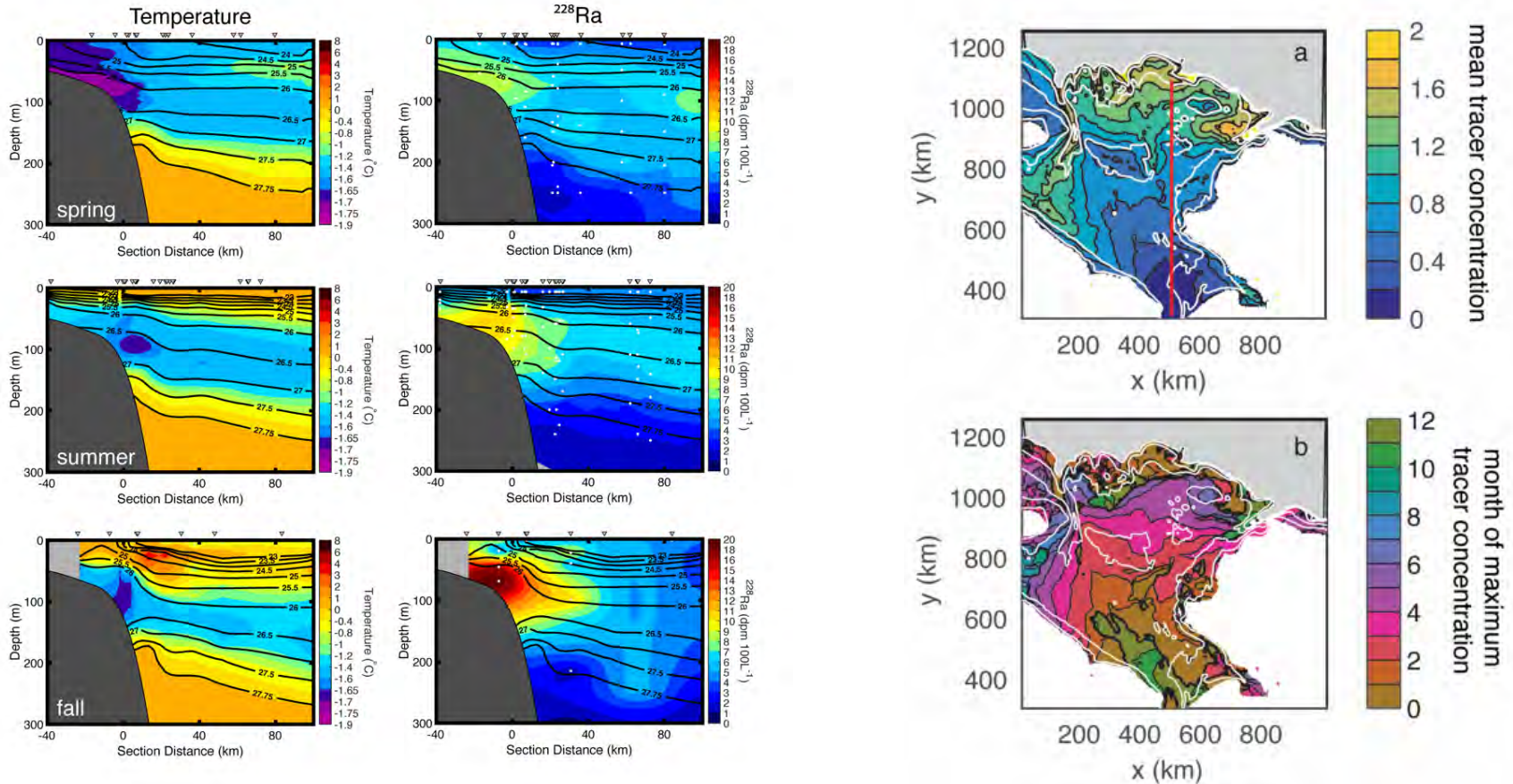


Inputs of shelf-derived materials vary seasonally and spatially

- Strongest shelf-derived inputs are seen at the shelfbreak in late fall and winter.
- A sediment-derived tracer in a regional circulation model supports the observed trends in Ra activities measured in the Chukchi Sea over the last ~decade.



Collaborations:

Come talk to us if you are interested in discussing shelf fluxes!

**Also happy to share insights on organizing synthesis efforts based on experience with the TPD paper!*